



Community Health Stockport

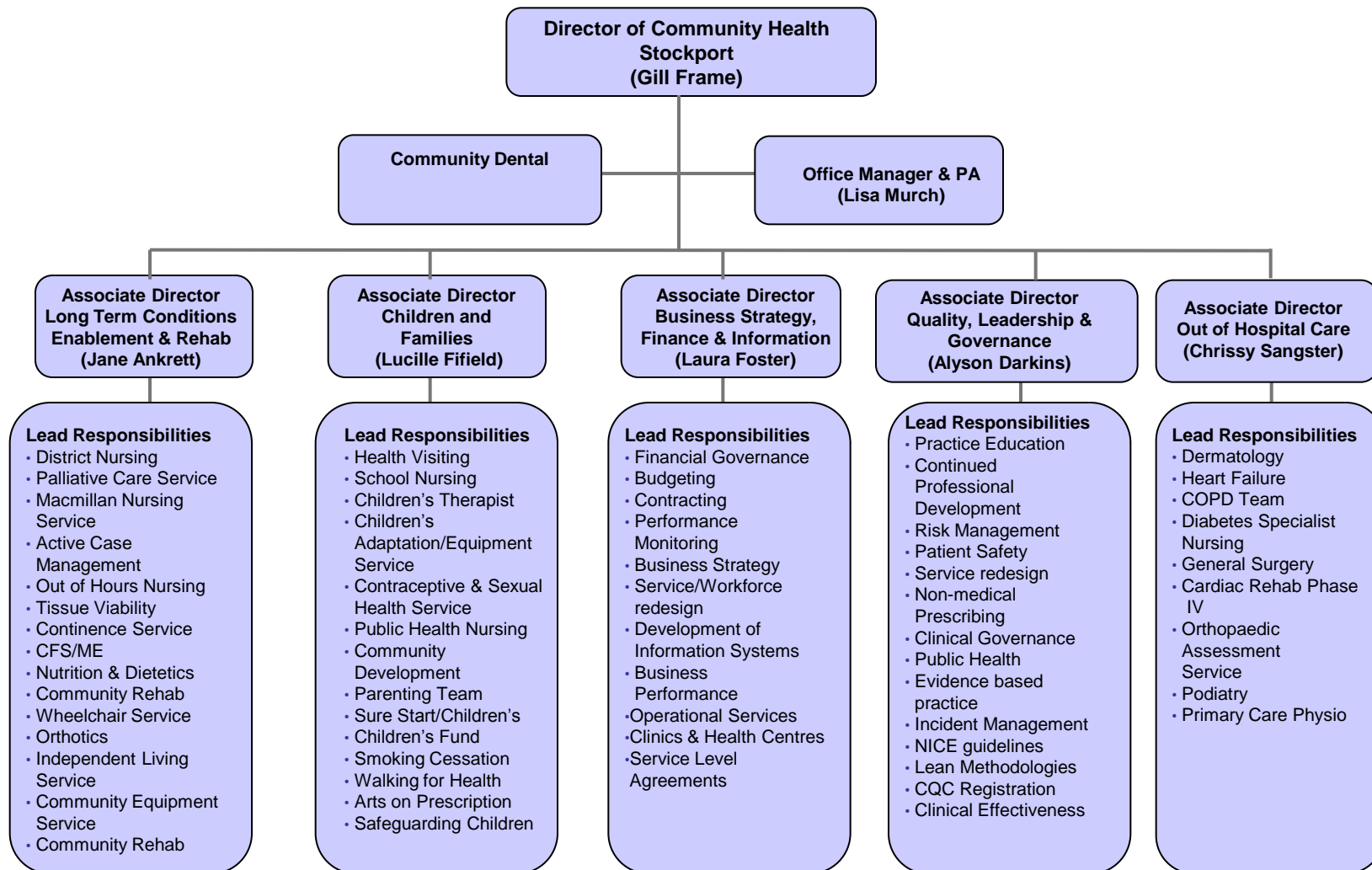
Your Partner in Health

PRESENTATION TO LINK

JUNE 2010

Gill Frame
Director Community Health Stockport

Organisational Structure



NHS Stockport Board



Community Health Stockport

Your Partner in Health

Provider Committee

Function

- Organisational & Operational Issues
- Business Case Approval
- Monitor Sub-Committee Work
- Vacancy Authorisation
- Expenditure Authorisation

Community Health Stockport Management Team

Business Performance Committee

Function

- Finance & Performance Management
- KPI
- Quality Indicators
- HR Workforce Information

Head of Service

Patient Safety / Experience
CQC Outcomes
1,7,8, 10, 11, 16 & 17

Service/Workforce
Development
CQC Outcomes 12, 13 &
14

Clinical Effectiveness
CQC Outcomes
2,4,5,6, 9 & 21

Health & Safety
Committee

PICC PALS /
Incidents / Complaints
/ Claims

Functions

- Incident Management
- Risk Management
- Assurance Framework
- NHSLA
- Infection Control
- Safeguarding (Adults/Children)
- Medical Devices
- Infection Control
- Health & Safety
- Decontamination
- Complaints
- PALS
- Claims
- Estates

Functions

- Education/Training
- Delivering the Workforce
- Workforce Development
- Workforce Strategy
- PDPs/KSF
- Staff Survey
- Consent/Caldcott
- Service Re-design
- Lean Methodologies

Functions

- Clinical Audit
- NICE
- Public Health
- Evidence-Based Practice
- Policy/Protocol/
- Guidelines Ratification
- Records Management
- Service Reviews/Action Plan
- Research Governance
- Business Continuity

Quality & Registration Implementation Group (QRIG)

Aspirations – Our Vision

Safe

Financially
Viable

Effective &
Efficient

**Provider of Choice for the commissioners
and public by integrating our services with other
key providers along pathways
and alternative models of care**

High Quality

Personalised

Responsive

Accessible

Our Commitment – we wills

- We will help to improve your health by providing services for you, no matter who you are or where you live in Stockport
- We will organise our services to:
 - Reduce your waiting times
 - Involve you, your family and carers
 - Include other services when needed
- We aim to keep improving and providing you with high quality services that meet or exceed NHS Standards
- We will keep you safe by:
 - Making sure that the environment is clean
 - Providing competent staff
 - Use the best evidence
 - Monitor Standards
- We will continue to listen to you so that future developments are based on your needs

National Policy - Operating Framework Requirements

NHS Operating Framework has set out the following requirement 'by March 2010':-

“PCT’s must have agreed with SHA’s proposals for the future organisational structure of all current PCT provided Community Services”.

Agreed with SHA’s means that PCT’s should have secured approval in principle from SHA’s for proposals for the future organisational form of their directly provided Community Services.

Looking for implementation of plans by March 2011 – there needs to be time to undertake full consultation with staff, professional bodies, trade unions, patients, public and key stakeholders.

Current PCT Proposals:

- **Services for Adults – integration with SMBC**

i.e.

- District Nursing – including OOH, Evening Service
- Community Rehabilitation Services
- Services for People with Disability – Wheelchair, Community Equipment
- Long Term Conditions – including Primary Care Continence Services, Tissue Viability, CFS/ME, Active Case Management
- End of Life Services
- Lifestyle Services

- **Services for Children and Families – integration with SMBC Children’s Services**

i.e.

- Public Health Nursing (HV/SN) Services
- Family Nurse Partnership (FNP)
- Children’s Therapy (Disability Partnership)
- Special School Nursing / Continuing Care in Schools

- **Services for Acute Care outside Hospital – integration with Stockport Foundation Trust**

i.e.

- Tier 2 – Dermatology, General Surgery Orthopaedics, COPD, Heart Failure
- Early Intervention Service (EIS)
- Podiatry, Diabetes Specialist Services, Orthotics
- Primary Care Physiotherapy
- Sexual Health Services
- Nutrition and Dietetics

Ongoing work yet to be determined

- **Community Dental Services**
 - Considering wider geographical footprint
 - Section 56 – integration with General Dental Services

Integration – what does it mean?

- Working together as teams to meet the needs of the people of Stockport
- Single management of services to promote innovation, provider better quality and experience of care for individuals
- Can include health and social care; community, hospital and primary care
- Opportunities to look at new ways of working, creating and developing new roles.
- Real opportunity to do things differently.

Benefits

Children and Families

- Builds on existing integrated delivery model
- Health Child Programme – integration of universal services
- Integrated Workforce Development

Adult Services

- Development of integrated teams at locality level
- Services built around the needs of individuals
- Enabling people to be supported in their own home

Acute Care Outside Hospital

- Pathway development between primary, community and secondary care
- Opportunity to develop sub acute care in a community setting
- Early Intervention Service becoming part of the whole system urgent care redesign

What does it mean for staff

- Approximately 900 affected
- Some will transfer to Foundation Trust – about 25%
- We are consider option to second staff to the LA under Section 75 arrangements
- We have some work to do about the future employment of these staff